



1

FleetCam Essential Camera

Light Duty Vehicles:

- **Adhere the camera to the center** of the windshield directly under the rear view mirror.
- **Clean the mounting surface** with rubbing alcohol before mounting.

Heavy Duty Vehicles:

- **Adhere the camera to the center** of the windshield in the top 2 inches of the wiper path.
- **Clean the mounting surface** with rubbing alcohol before mounting.

- If the center of the windshield is an obstruction to the driver's line of vision the FC Pro can be offset towards the passenger side of the windshield.
- **Maximum offset** measurement allowed is **4 inches**.
- **Adjust camera** position to be **as vertical as possible**.

2

Power Box (used to sense vibration)

Adhere the power box to the chassis of the vehicle via double-sided tape.

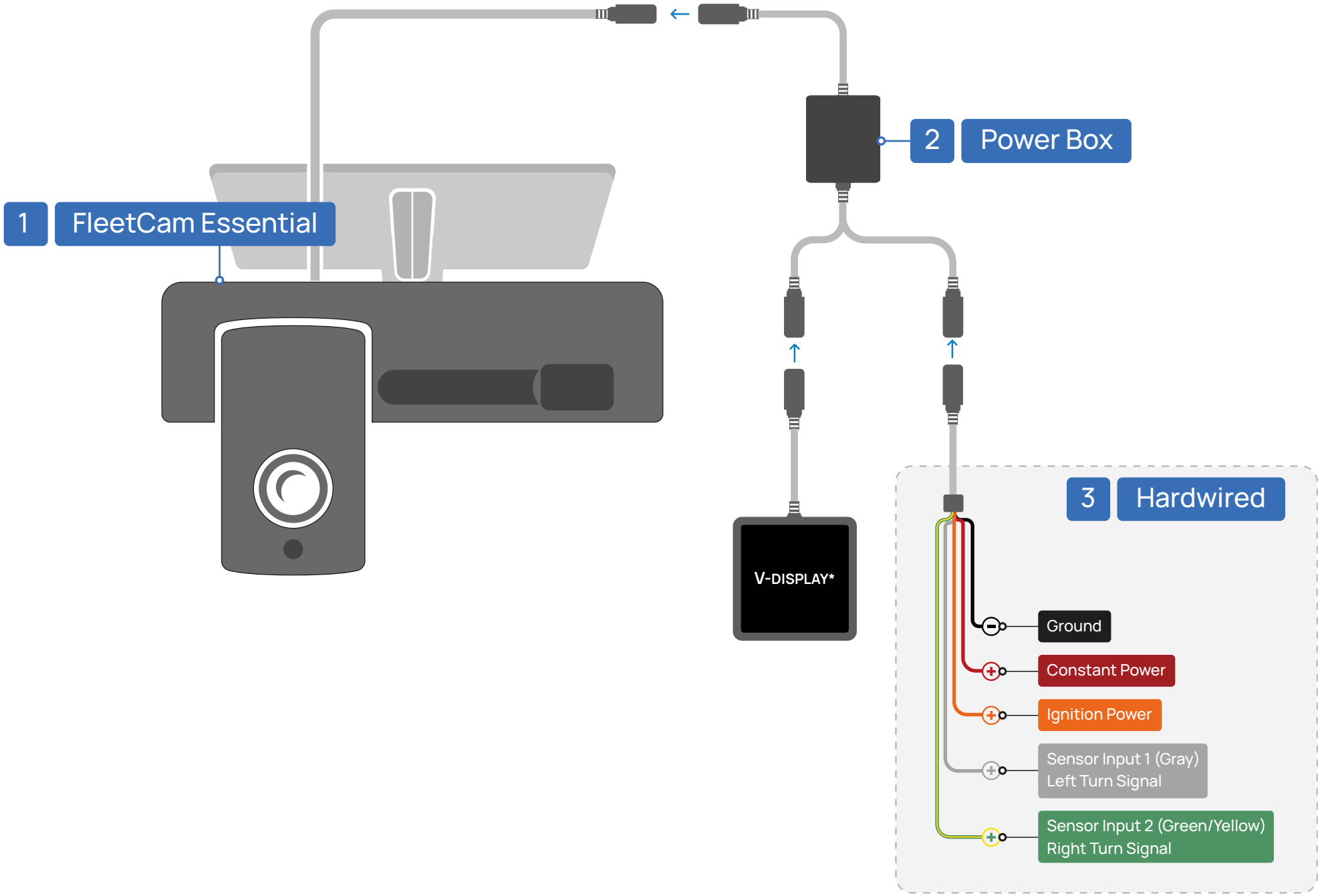
3

Hardwired

- **Red** wire to **constant power source (+)**.
- **Orange** wire to **ignition power source(+)**.
- **Black** wire to **chassis ground (-)**.

Optional (used for Lane Departure)

- **Gray** wire (sensor input 1) to **left turn signal (+)**.
- **Green/yellow** wire (sensor input 2) to **right turn signal (+)**.





1

FleetCam Essential Camera

- **Adhere the camera to the center** of the windshield directly **under the rear view mirror**.
- **Clean the mounting surface** with rubbing alcohol before mounting.
- If the center of the windshield is an obstruction to the driver's line of vision the FC Pro can be offset towards the passenger side of the windshield.
- **Maximum offset** measurement allowed is **4 inches**.
- **Adjust camera position** to be **as vertical as possible**.

2

Power Box (used to sense vibration)

Adhere the power box to the chassis of the vehicle via double-sided tape.

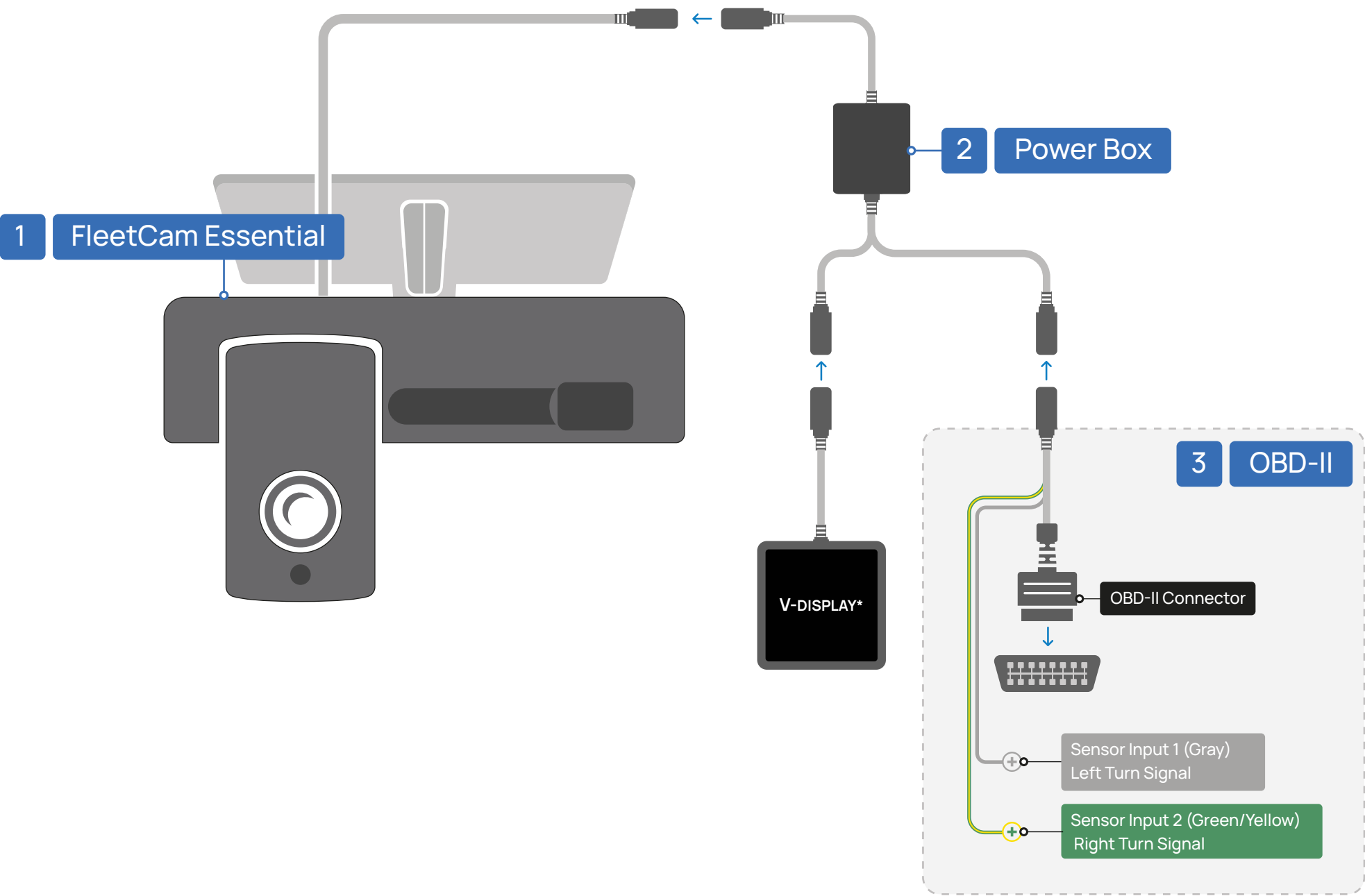
3

OBD-II Connection

Plug the OBDII connection into the vehicle's OEM OBDII port.

Optional (used for Lane Departure)

- **Gray** wire (sensor input 1) to **left turn signal (+)**.
- **Green/yellow** wire (sensor input 2) to **right turn signal (+)**.



## 1 FleetCam Essential Camera

- **Adhere the camera to the center** of the windshield in the top 2 inches of the wiper path.
- **Clean the mounting surface** with rubbing alcohol before mounting.
- If the center of the windshield is an obstruction to the driver's line of vision the FC Pro can be offset towards the passenger side of the windshield.
- **Maximum offset** measurement allowed is **4 inches**.
- **Adjust camera** position to be **as vertical as possible**.

**2 Power Box (used to sense vibration)**

Adhere the power box to the chassis of the vehicle via double-sided tape.

### 3 JBUS Connection

Plug the **JBUS** connection into the **vehicle's OEM JBUS port**.

Optional (used for Lane Departure)

- **Gray** wire (sensor input 1) to **left turn signal (+)**.
- **Green/yellow** wire (sensor input 2) to **right turn signal (+)**.

