



1 FleetCam Pro Camera

Light Duty Vehicles:

- Adhere the camera to the center of the windshield directly under the rear view mirror.
- Clean the mounting surface with rubbing alcohol before mounting.

Heavy Duty Vehicles:

- Adhere the camera to the center of the windshield in the top 2 inches of the wiper path.
- Clean the mounting surface with rubbing alcohol before mounting.

- If the center of the windshield is an obstruction to the driver's line of vision the FC Pro can be offset towards the passenger side of the windshield.
- Maximum offset measurement allowed is 4 inches.
- Adjust camera position to be as vertical as possible.

2 Power Box (used to sense vibration)

Adhere the power box to the chassis of the vehicle via double-sided tape.

3 Hardwired

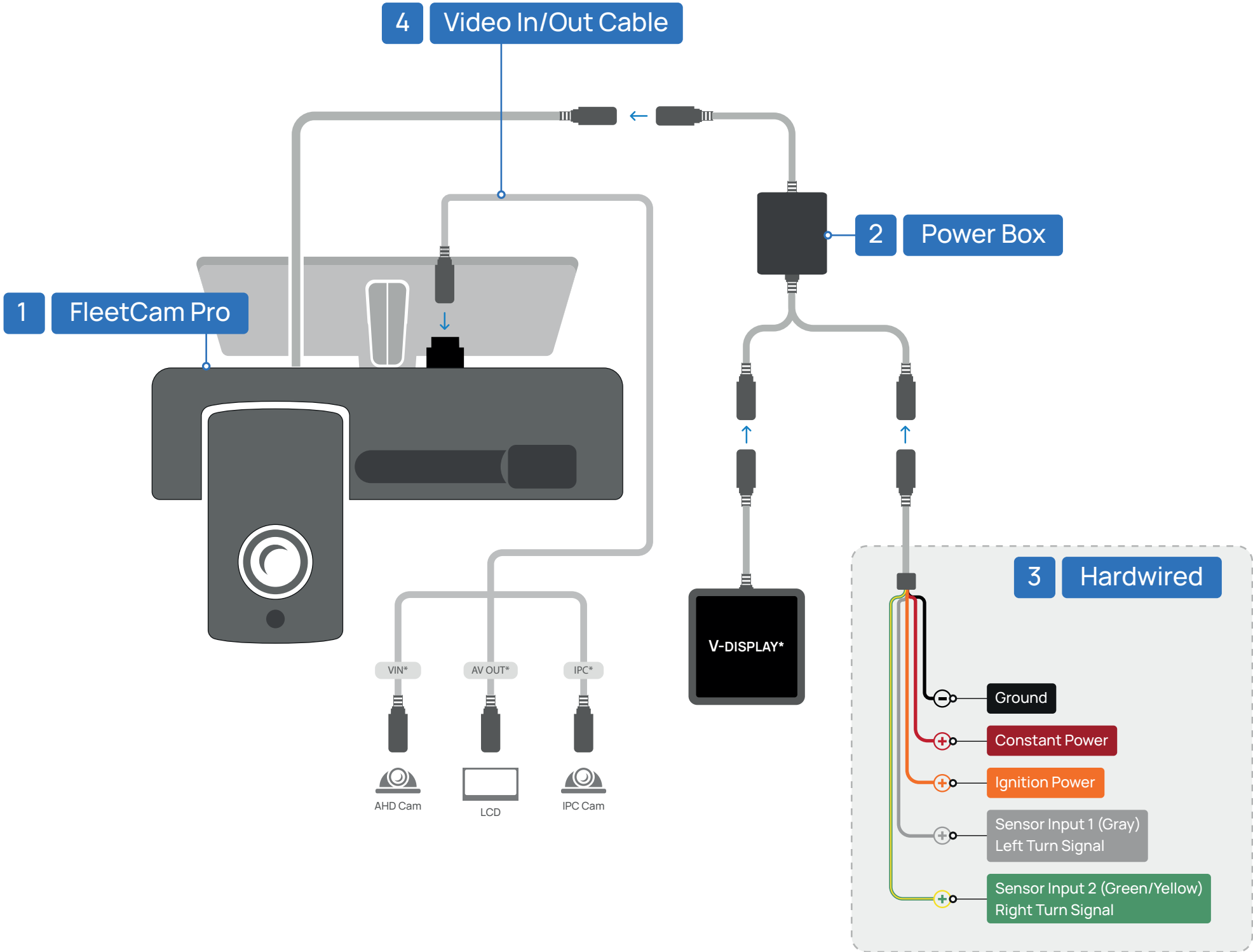
- Red wire to constant power source (+).
- Orange wire to ignition power source(+).
- Black wire to chassis ground(-).

Optional (used for Lane Departure)

- Gray wire (sensor input 1) to left turn signal (+).
- Green/yellow wire (sensor input 2) to right turn signal (+).

4 Video In/Out Cable

Used for LCD and auxiliary cams.





1 FleetCam Pro Camera

- Adhere the camera to the center of the windshield directly under the rear view mirror.
- Clean the mounting surface with rubbing alcohol before mounting.
- If the center of the windshield is an obstruction to the driver's line of vision the FC Pro can be offset towards the passenger side of the windshield.
- Maximum offset measurement allowed is 4 inches.
- Adjust camera position to be as vertical as possible.

2 Power Box (used to sense vibration)

Adhere the power box to the chassis of the vehicle via double-sided tape.

3 OBD-II Connection

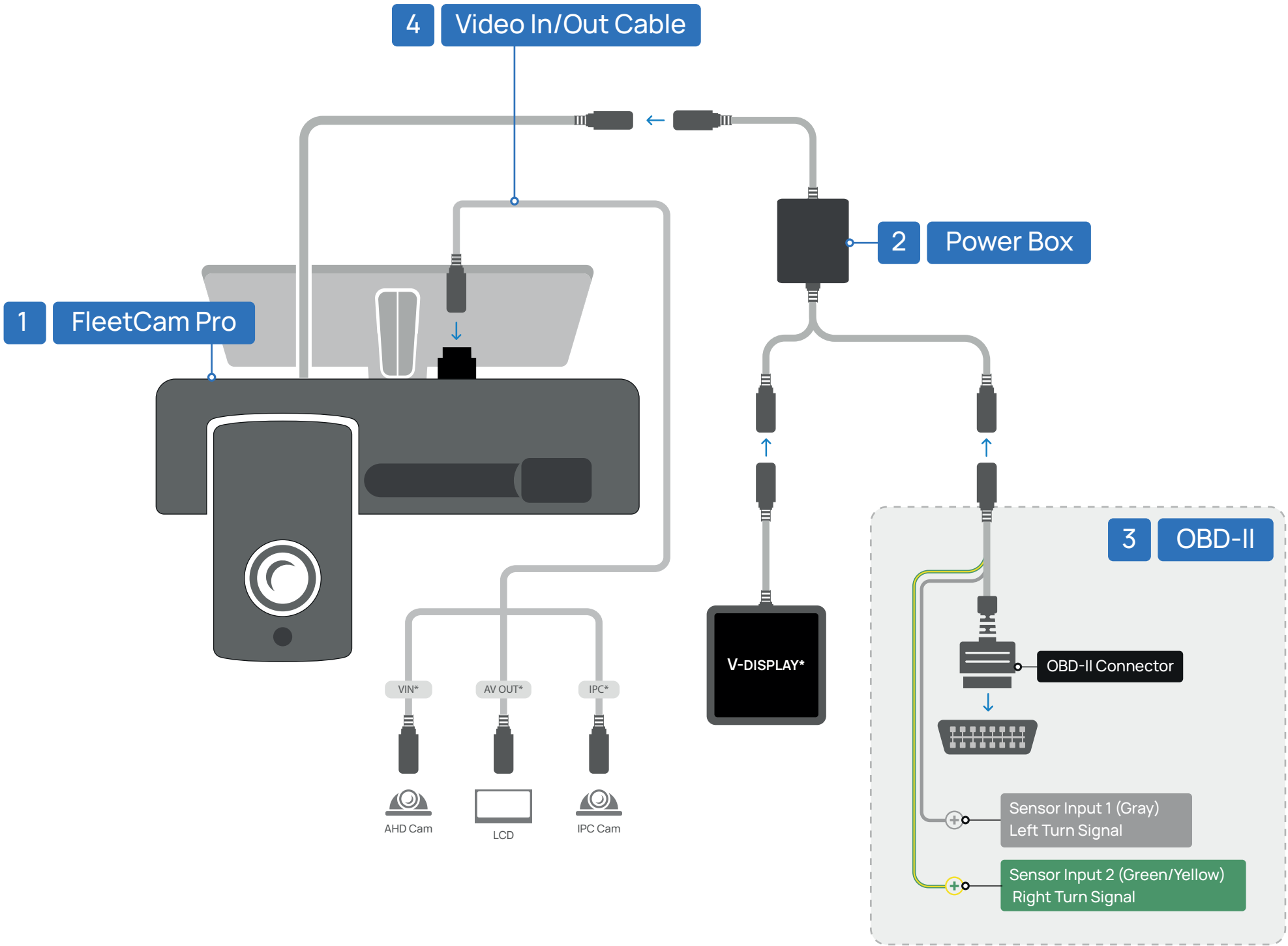
Plug the OBDII connection into the vehicle's OEM OBDII port.

Optional (used for Lane Departure)

- Gray wire (sensor input 1) to left turn signal (+).
- Green/yellow wire (sensor input 2) to right turn signal (+).

4 Video In/Out Cable

Used for LCD and auxiliary cams.





1 FleetCam Pro Camera

- Adhere the camera to the center of the windshield in the top 2 inches of the wiper path.
- Clean the mounting surface with rubbing alcohol before mounting.
- If the center of the windshield is an obstruction to the driver's line of vision the FC Pro can be offset towards the passenger side of the windshield.
- Maximum offset measurement allowed is 4 inches.
- Adjust camera position to be as vertical as possible.

2 Power Box (used to sense vibration)

Adhere the power box to the chassis of the vehicle via double-sided tape.

3 JBUS Connection

Plug the JBUS connection into the vehicle's OEM JBUS port.

Optional (used for Lane Departure)

- Gray wire (sensor input 1) to left turn signal (+).
- Green/yellow wire (sensor input 2) to right turn signal (+).

4 Video In/Out Cable

Used for LCD and auxiliary cams.

