



1 FleetCam Pro Camera

Light Duty Vehicles:

- Adhere the camera to the center of the windshield directly under the rear view mirror.
- Clean the mounting surface with rubbing alcohol before mounting.

Heavy Duty Vehicles:

- Adhere the camera to the center of the windshield in the top 2 inches of the wiper path.
- Clean the mounting surface with rubbing alcohol before mounting.

- If the center of the windshield is an obstruction to the driver's line of vision the FleetCam Pro can be offset towards the passenger side of the windshield.
- Maximum offset measurement allowed is 4 inches.
- Adjust camera position to be as vertical as possible.

2 Power Box

- Used to sense vibration
- Adhere the power box to the chassis of the vehicle via double-sided tape.

3 Power Harness

- Red wire to constant power source (+).
- Orange wire to ignition power source(+).
- Black wire to chassis ground(-).

Lane Departure (Optional)

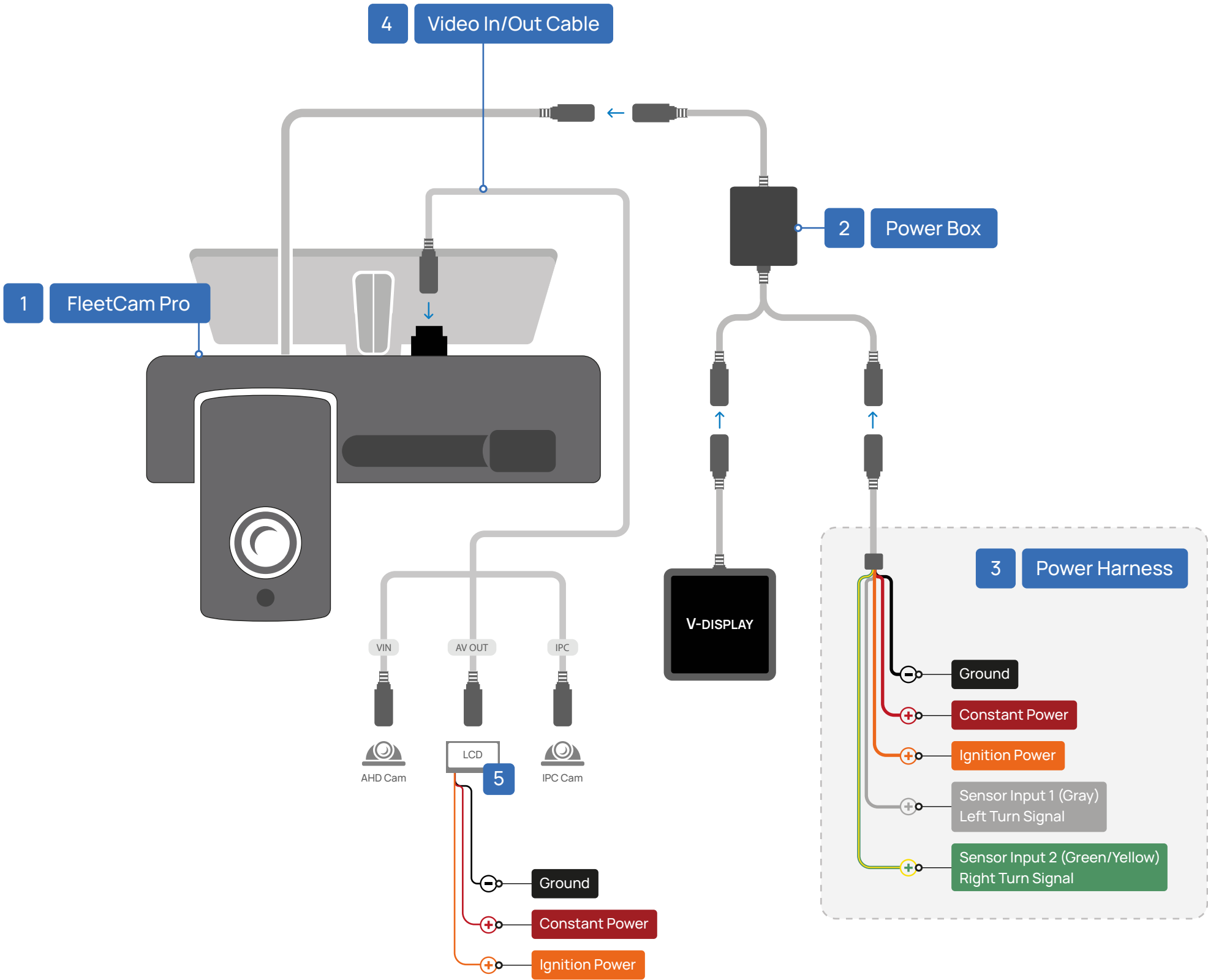
- Gray wire (sensor input 1) to left turn signal (+).
- Green/Yellow wire (sensor input 2) to right turn signal (+).

4 Video In/Out Cable

Used for LCD and auxiliary cams.

5 LCD

- Connect the Red wire to constant power source(+).
- Connect the Orange wire to ignition power source(+).
- Connect the Black wire to chassis ground(-).





1 FleetCam Pro Camera

- Adhere the camera to the center of the windshield directly under the rear view mirror.
- Clean the mounting surface with rubbing alcohol before mounting.
- If the center of the windshield is an obstruction to the driver's line of vision the FleetCam Pro can be offset towards the passenger side of the windshield.
- Maximum offset measurement allowed is 4 inches.
- Adjust camera position to be as vertical as possible.

2 Power Box

- Used to sense vibration
- Adhere the power box to the chassis of the vehicle via double-sided tape.

3 OBD-II Connection

Plug the OBDII connection into the vehicle's OEM OBDII port.

Lane Departure (Optional)

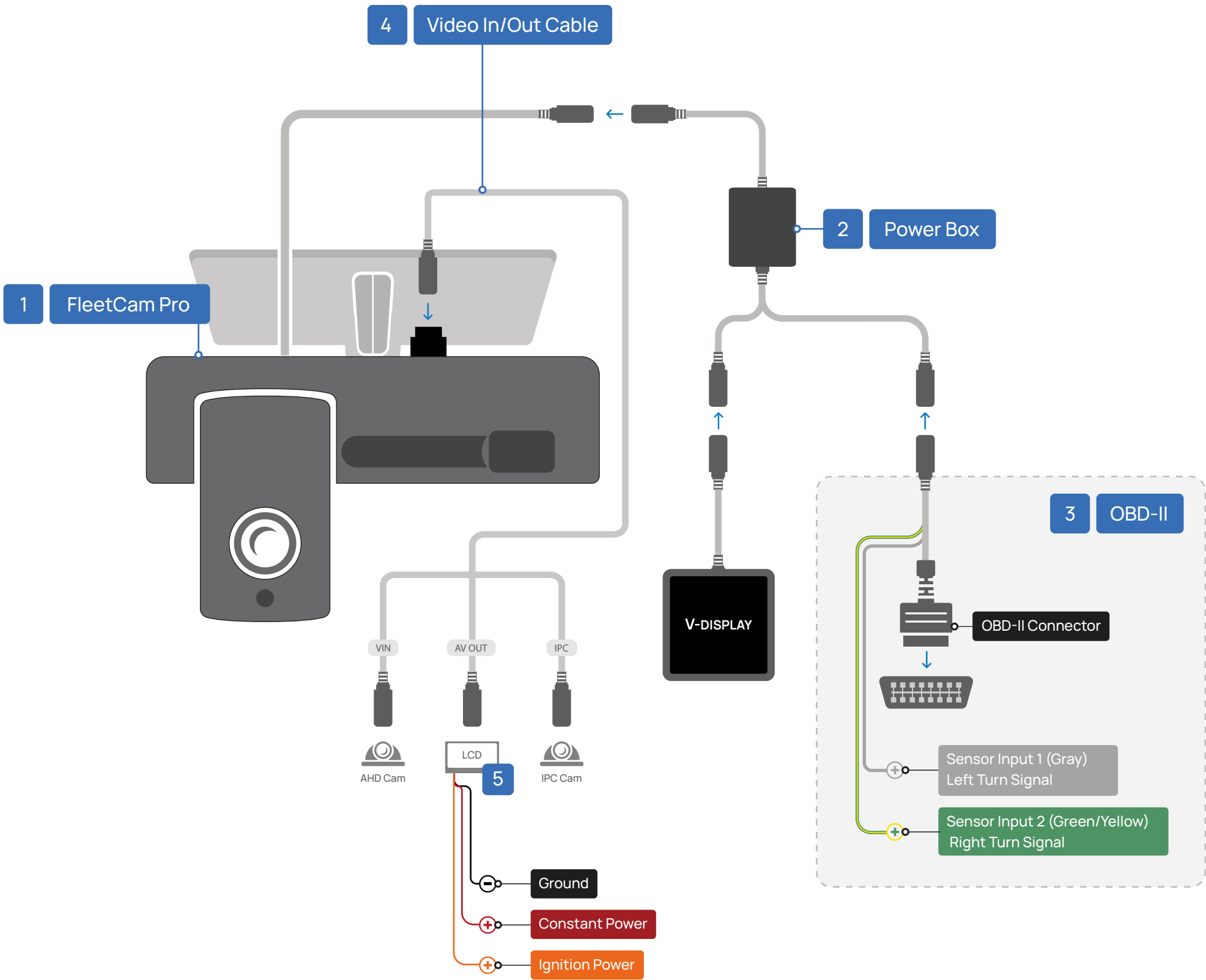
- Gray wire (sensor input 1) to left turn signal (+).
- Green/Yellow wire (sensor input 2) to right turn signal (+).

4 Video In/Out Cable

Used for LCD and auxiliary cams.

5 LCD

- Connect the Red wire to constant power(+).
- Connect the Orange wire to ignition power(+).
- Connect the Black wire to chassis ground(-).





1 FleetCam Pro Camera

- Adhere the camera to the center of the windshield in the top 2 inches of the wiper path.
- Clean the mounting surface with rubbing alcohol before mounting.
- If the center of the windshield is an obstruction to the driver's line of vision the FleetCam Pro can be offset towards the passenger side of the windshield.
- Maximum offset measurement allowed is 4 inches.
- Adjust camera position to be as vertical as possible.

2 Power Box

- Used to sense vibration
- Adhere the power box to the chassis of the vehicle via double-sided tape.

3 JBUS Connection

Plug the JBUS connection into the vehicle's OEM JBUS port.

Lane Departure (Optional)

- Gray wire (sensor input 1) to left turn signal (+).
- Green/Yellow wire (sensor input 2) to right turn signal (+).

4 Video In/Out Cable

Used for LCD and auxiliary cams.

5 LCD

- Connect the Red wire to constant power(+).
- Connect the Orange wire to ignition power(+).
- Connect the Black wire to chassis ground(-).

