



Comprehensive user-friendly fleet management



Take control of your fleet with IntelliHub®

Track, manage, and analyze fleet and field operations with the most comprehensive fleet management software on the market.



Vehicle Tracking

Real-time location tracking with speed, ignition status, driver behavior, engine data, and more.



Asset Tracking

Track and manage equipment, machinery, and tools in real-time. Increase uptime with maintenance management.



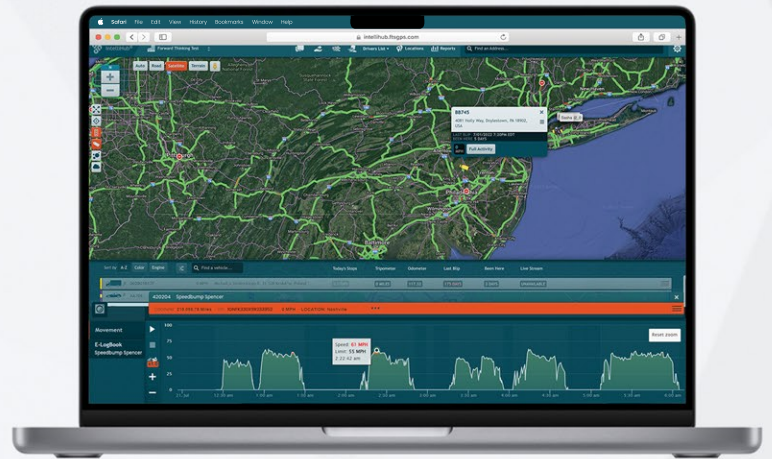
Analytics & Reporting

Turn fleet data into actionable intelligence with smart analytics, alerting, and reporting.



Your fleet in a browser.

IntelliHub® is the browser-based command center for your entire fleet. This is where you manage the workload agenda and see every bit of vehicle and driver activity.



Seamless Hours of Service

Duty logs are displayed as a bar graph with unique colors for each duty status and helpful visual cues.

2-Way Messaging

Send and receive freehand messages and quick / canned messages to drivers or groups of drivers.

Driver Scorecards

Driver Scorecards help you protect your vehicles from unnecessary wear and tear by identifying bad driving behavior.

IFTA Reporting

IntelliHub® simplifies IFTA fuel tax reporting by collecting and consolidating your fuel and mileage data.

Fuel Card Integrations

Our fleet management solution is natively integrated with some of the largest fuel card providers.

Activity Reports

Put all of your vehicle and driver activity data to work with our fleet reports built to help you understand your fleet's aspect.

Live Vehicle Cameras

Watch your drivers in real-time, automatically capture clips of unsafe driving, and download historical video.

Location Manager

Saving locations and geographic areas will enhance your dispatching process and give you invaluable information.

Alerts & Notifications

Change the way you react to unwelcome activity with fleet alerts that are triggered by important events.

