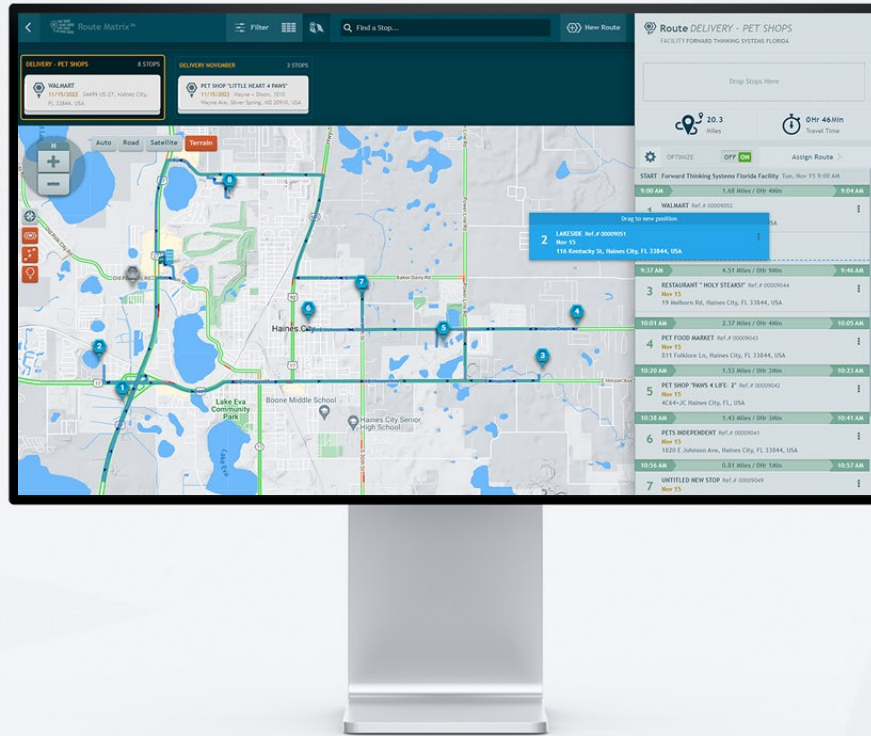




# Route Matrix®

## More stops in less time.



Unlock your time and resources with routes that are automatically sorted into hyper-efficient orders. Customize sorting preferences for time, distance, service, and other factors. Manually override routes with ease.



### Automatically Optimize Routes

Auto-sort for the most efficient order with distance, time, equipment, personnel, and other factors.



### Override and Customize

Easily drag-and-drop stops to respond to changing needs and conditions.



### Provide Accurate ETAs

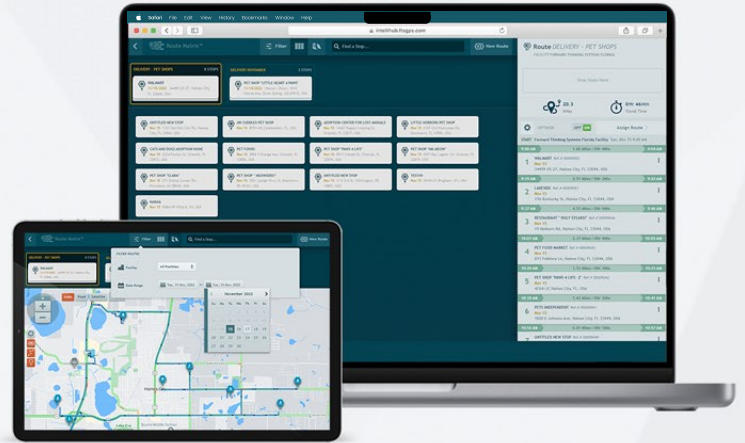
Know when drivers will arrive at their next stops and keep the office, customers, and the field in sync at all times.



# Route Matrix<sup>®</sup>

## More stops in less time.

Route Matrix helps you build cost-effective routes with little effort by automatically optimizing your stops into the most efficient order, saving time and fuel.



## Automatic Optimization

Stops are automatically sorted into the most efficient order, taking into account distance, travel time, and a growing list of other factors.

## Override & Customize

Easily override stop order when special factors like customer preference or truck unloading requirements make it necessary.

## Easy to Use

Build routes with insight in a clean, simple interface that lets you drag and drop stops around.

## Route Totals Summary

As you add stops to the route, the total distance and travel time are automatically recalculated so you'll immediately know how the additional stop affected the route.

## Visual Route Building

The interactive map shows you the path that a selected route takes, as well as unassigned stops that aren't yet on any route.

## Accurate ETAs for Stops

Route Matrix estimates arrival times for each stop while you build routes so you'll know approximately when drivers will arrive before they even start driving.

