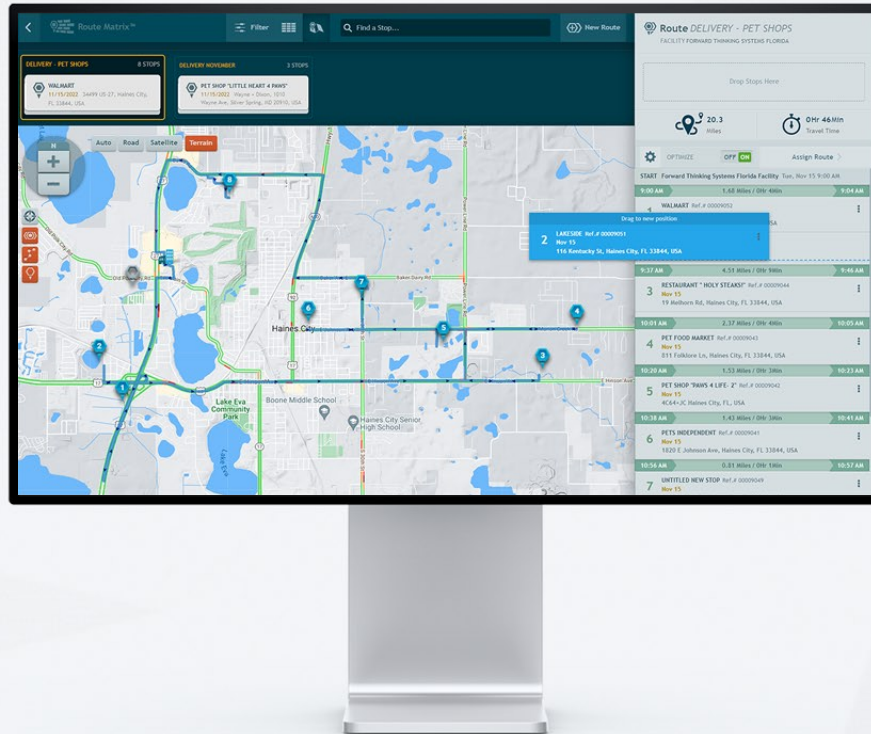




More stops in less time.



Unlock your time and resources with routes that are automatically sorted into hyper-efficient orders. Customize sorting preferences for time, distance, service, and other factors. Manually override routes with ease.



Automatically Optimize Routes

Auto-sort for the most efficient order with distance, time, equipment, personnel, and other factors.



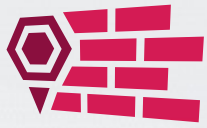
Override and Customize

Easily drag-and-drop stops to respond to changing needs and conditions.



Provide Accurate ETAs

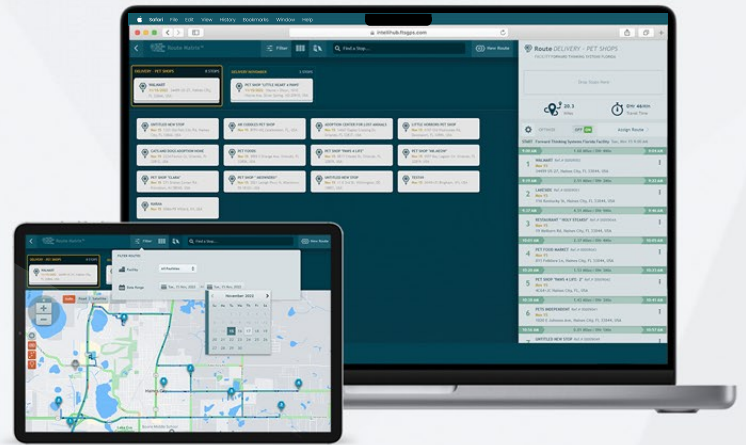
Know when drivers will arrive at their next stops and keep the office, customers, and the field in sync at all times.



Route Matrix®

More stops in less time.

Route Matrix helps you build cost-effective routes with little effort by automatically optimizing your stops into the most efficient order, saving time and fuel.



Automatic Optimization

Stops are automatically sorted into the most efficient order, taking into account distance, travel time, and a growing list of other factors.

Easy to Use

Build routes with insight in a clean, simple interface that lets you drag and drop stops around.

Visual Route Building

The interactive map shows you the path that a selected route takes, as well as unassigned stops that aren't yet on any route.

Override & Customize

Easily override stop order when special factors like customer preference or truck unloading requirements make it necessary.

Route Totals Summary

As you add stops to the route, the total distance and travel time are automatically recalculated so you'll immediately know how the additional stop affected the route.

Accurate ETAs for Stops

Route Matrix estimates arrival times for each stop while you build routes so you'll know approximately when drivers will arrive before they even start driving.

